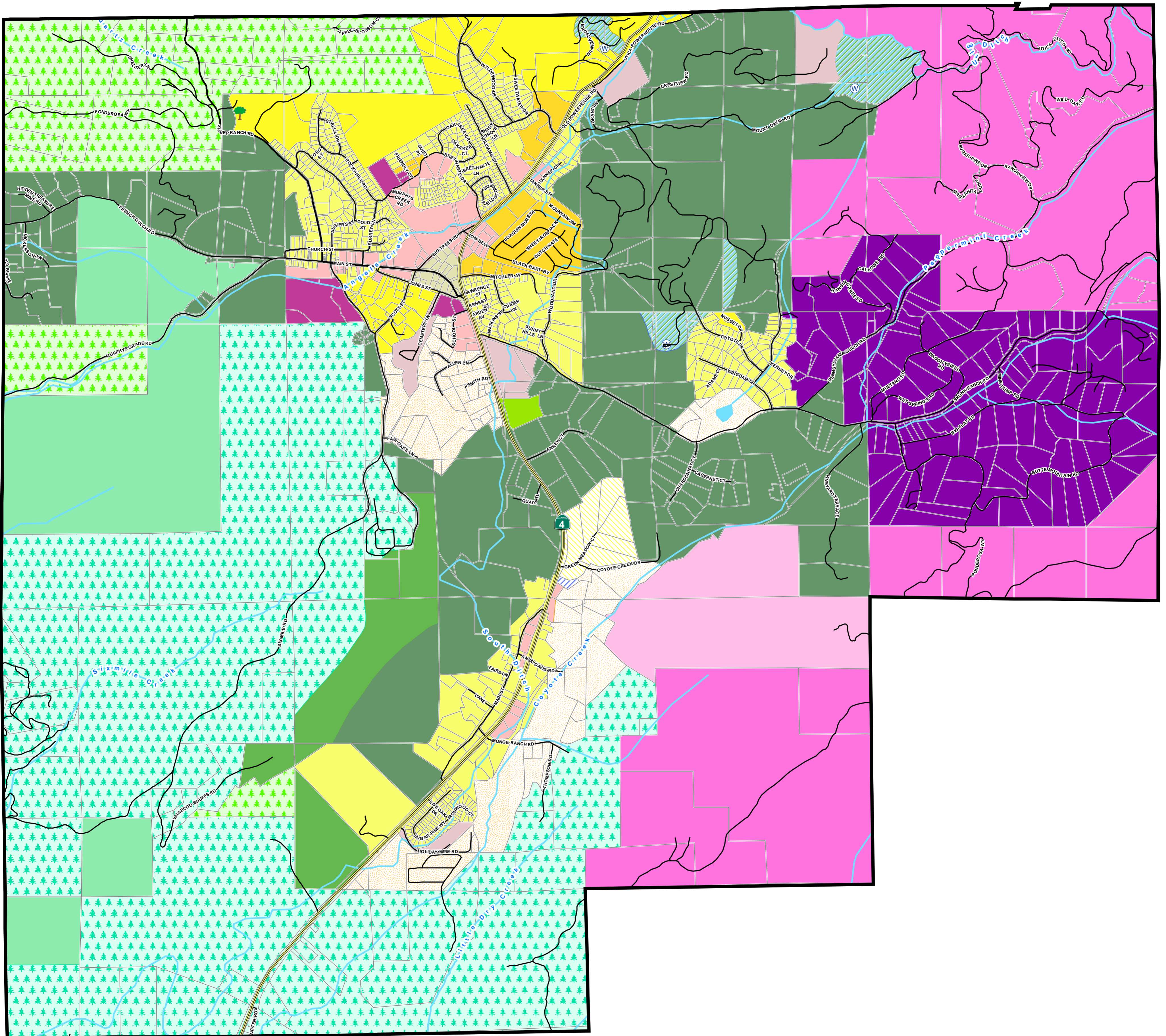


Murphys-Douglas Flat Community Plan Land Use Designations



Legend

State Highways	Commercial	Rural Residential - 5 acre	Public Service
Main Roads	Industrial	Rural Residential - 6 acre	Domestic Water
Roads	Multi-Family Residential - 12 units per acre	Rural Residential - X	Recreation
Rivers	Mixed Use	Rural Transition - 20 acre	Agriculture Preserve
Lakes	Single Family Residential - 4 units per acre	Rural Transition - 5 acre	Resource Production - 10 acre
Parcels	Rural Residential - 1 acre	Rural Transition - X	Resource Production - 20 acre
Public Water Supply	Rural Residential - 10 acre	Professional Offices	
Proposed Park			



For planning purposes only.
All feature locations are
approximate.



Calaveras County
Planning Department
San Andreas, California
As of January 2008

