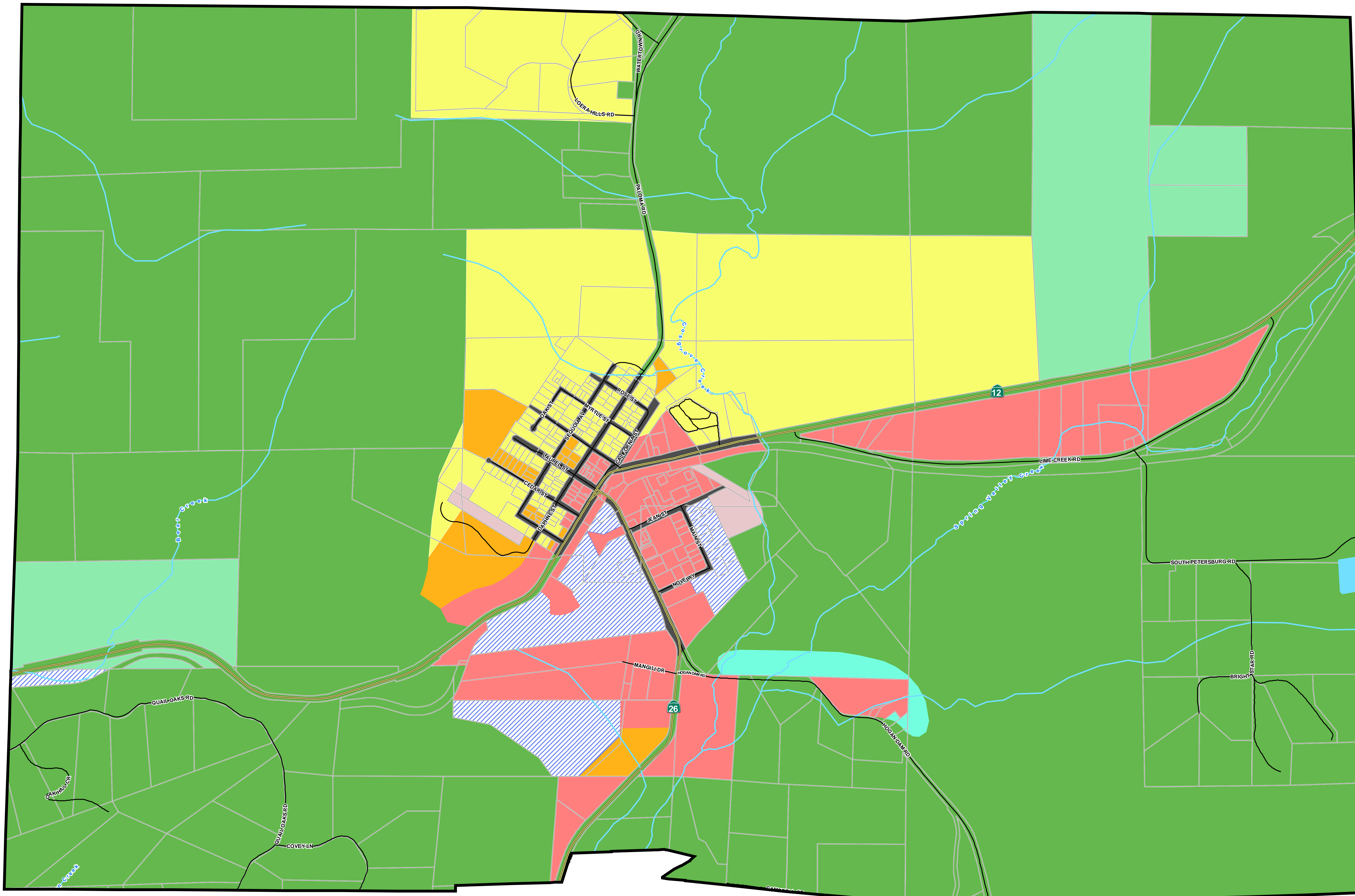


Valley Springs Community Plan Land Use Designations



Legend

- State Highways
- Main Roads
- Roads
- Lakes
- Rivers
- Parcels
- Commercial
- Commercial Recreational
- Industrial
- Single Family Residential
- Multi-Family Residential
- Agricultural Rural
- Agricultural Preserve
- Public Service
- Road Right of Way



For planning purposes only.
All feature locations are approximate.



Calaveras County
Planning Department
San Andreas, California
As of January 2008

